

# Strong

## Thermal Transfer Ribbons



### Enhanced Wax Ribbon

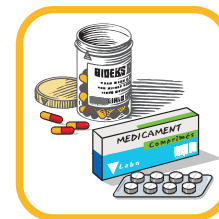
With an excellent blackness and a very good receptor multi-compatibility and sensitivity, Etipack Strong is a wax ribbon enhanced with resin where good smudge resistance is required. It can be used on labels for inventory, shipping, pharmaceutical, retail labelling, conveyor sorting, tags.



Inventory



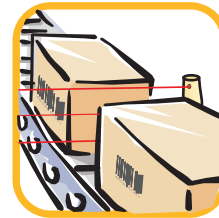
Outdoor applications



Pharmaceutical



Tags



Conveyor sorting



Signage & Logos

### TECHNICAL SPECIFICATIONS

#### Strong

#### Print energy

Low

#### Print speed

300 mm/s

#### Smudge resistance

Very good

#### Heat resistance

100° C

#### Antistatic

Yes

#### Labels compatibility (papers)

Uncoated:	Excellent
Coated:	Excellent
High gloss:	Excellent
Synthetics:	Good

#### Color range

(The other colors available up on request)

■  
Black